

Fanta Icy Lemon 330ml



EAN

544900006004

Target market(s)

GB

Components

Ingredients

Carbonated Water
Lemon Juice from Concentrate (5%)
Sugar
Acidity Regulator (Sodium Gluconate)
Citric Acid
Sweeteners (Acesulfame K, Aspartame)
Malic Acid
Preservative (Potassium Sorbate)
Stabilisers (Acacia Gum, Glycerol Esters of Wood Rosins)
Antioxidant (Ascorbic Acid)
Natural Lemon Flavouring with other Natural Flavourings

Nutrition

	Per 100ml	Per 330ml (%)
Energy	81kJ	267kJ
	19kcal	63kcal (3%)
Fat	0g	0g (0%)
Of which saturates	0g	0g (0%)
Carbohydrate	4.5g	15g (6%)
Of which sugars	4.5g	15g (17%)
Protein	0g	0g (0%)
Salt	0.02g	0.07g (1%)

*Reference intake of an average adult (8400kJ/2000kcal)

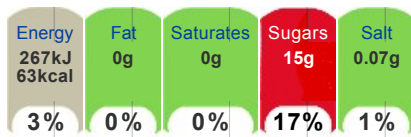
Calculated Nutrition

	per 100ml	Per 330ml
Energy (kJ)	81	267
Energy (kcal)	19	63
Fat (g)	0	0
of which saturates (g)	0	0
Carbohydrate (g)	4.5	15
of which sugars (g)	4.5	15
Protein (g)	0	0
Salt (g)	0.02	0.07

Front of Pack Nutrition

Per Portion

A 330ml serving contains



Per 100ml 81kJ/19kcal

Reference intake of an average adult (8400kJ/2000kcal)

Product Description

Brand

Fanta

Features

Made with fruit juice
With natural flavours
No artificial colours
This product is GMO free
This product is gluten free
This product is allergen free
This product is suitable for vegetarians/vegans

Standardised Brand

Brand - Fanta

Regulated Product Name

Sparkling Lemon Fruit Drink with Sugar and Sweeteners

Marketing

Company Name

Coca-Cola European Partners Great Britain Limited

Company Address

Uxbridge,
UB8 1EZ.

Product Marketing

Tongue tingling refreshing with a lemony zing & fruit juice

Real fruit
Natural flavours
No artificial colours
Sugar and sweeteners

Serve ice cold for maximum refreshment.

Keep cold in the fridge.

Please recycle.

Brand Marketing

Coca-Cola and the Environment
Coca-Cola is committed to making a positive difference - to the health of the planet, consumers and the communities it serves. The company is working hard to reduce its impact on the environment in everything it does - growing more while using less in areas such as energy and water use, waste reduction and recycling - and by encouraging people to think more about the positive impact they can have on their local environment.

Other Information

Contains a Source of Phenylalanine.

Health & Lifestyle

Lifestyle

- Suitable for Vegans
- Suitable for Vegetarians

Allergy Advice

Celery - Free From
Cereals Containing Gluten - Free From
Crustaceans - Free From
Eggs - Free From
Fish - Free From
Gluten - Free From
Lupin - Free From
Milk - Free From
Molluscs - Free From
Mustard - Free From
Nuts - Free From
Peanuts - Free From
Sesame - Free From
Soya - Free From
Sulphur Dioxide/Sulphites - Free From

Additives

Artificial Colours - Free From
Genetically Modified Ingredients - Free From

Allergy Other Text

This product is allergen free

Additives Other Text

Contains natural flavourings
Contains added preservatives
Contains added intense sweeteners
Contains added antioxidants

Storage & Usage

Storage Type

Type

Ambient

Preparation and Usage

Best served chilled

Storage

Store cool and dry.
Best before end: See base of can for date.

Brandbank Captured Pack Data

Pack Size

330ml e

Numeric Size

Numeric Size - 330

Recycling Info

Can - Metal - Widely Recycled

Pack Type

Type - Can

Recycling Scheme

- OPRL

Customer Services

Manufacturers Address

Coca-Cola European Partners Great Britain Limited,
Uxbridge,
UB8 1EZ.

Return To

Coca-Cola European Partners Great Britain Limited,
Uxbridge,
UB8 1EZ.
0800 227711
Coca-Cola.co.uk

Telephone Helpline

0800 227711

Web Address

Coca-Cola.co.uk

Extended Data

Description Breakdown

Variant - Icy Lemon



FANTA Lemon

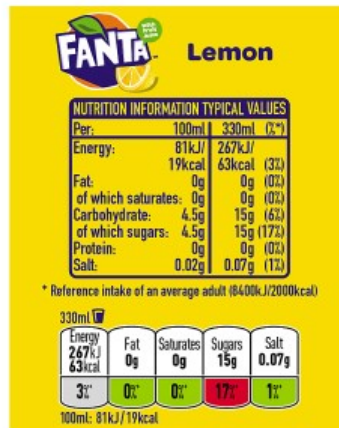
Sparkling Lemon Fruit Drink with Sugar and Sweeteners

INGREDIENTS

Carbonated Water, Lemon Juice from Concentrate (5%), Sugar, Acidity Regulator (Sodium Gluconate), Citric Acid, Sweeteners (Acesulfame K, Aspartame), Malic Acid, Preservative (Potassium Sorbate), Stabilisers (Acacia Gum, Glycerol Esters of Wood Rosins), Antioxidant (Ascorbic Acid), Natural Lemon Flavouring with Other Natural Flavourings.

WARNING STATEMENT

Contains a Source of Phenylalanine.



FANTA Lemon

NUTRITION INFORMATION		TYPICAL VALUES	
Per:	100ml	330ml (2*)	
Energy:	81kJ / 19kcal	267kJ / 63kcal	(32)
Fat:	0g	0g	(0%)
of which saturates:	0g	0g	(0%)
Carbohydrate:	4.5g	15g	(6%)
of which sugars:	4.5g	15g	(17%)
Protein:	0g	0g	(0%)
Salt:	0.02g	0.07g	(1%)

* Reference intake of an average adult (8400kJ/2000kcal)

330ml	
Energy	267kJ / 63kcal
Fat	0g
Saturates	0g
Sugars	15g
Salt	0.07g
3%	0%
0%	17%
0%	1%

100ml: 81kJ / 19kcal