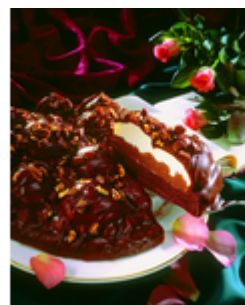


Sidoli Chocolate Lumpy Bumpy - Information

A round chocolate sponge base layered with chocolate flavour mousse and lumpy bumpy creamy cheesecake. The gateau is enrobed with chocolate flavour coating and finished with a sprinkling of dark & white mega chocolate curls. This gateau is pre-portioned into 12 portions and packed 1 gateau per outer.

TFS Product Code: 012753
Suppliers Product Code: 34495
Information Last Updated: 13/11/2023
Date Produced: 04/04/2026



Allergy Information

Key: **Contains** **May Contain**



Nutritional Information

Serving Unit:	100g or 100ml
Energy (kcal)	384.00
Energy (kJ)	1598.00
Protein (g)	4.30
Carb (g)	32.00
Of Which Sugars (g)	24.00
Fat (g)	26.50
Of Which Saturates (g)	13.40
Fibre (g)	0.70
Salt (g)	0.30

Dietary Information

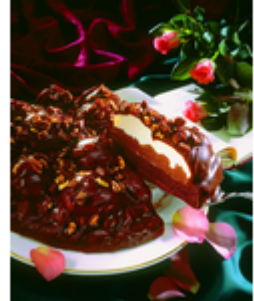
Key: **Suitable for**



Please Note: This information has been supplied by manufacturers and other third parties to Thompsons Food Service Ltd. Whilst we take steps to ensure the information is correct and regularly updated, we give no warranty and no guarantee to the accuracy of this information. Product information and ingredients may change; please always read product labels carefully in addition to this document for accuracy. Please also consider changes to ingredients when products have been substituted.

Sidoli Chocolate Lumpy Bumpy - Information

TFS Product Code: 012753
Suppliers Product Code: 34495
Information Last Updated: 13/11/2023
Date Produced: 04/04/2026



Ingredients

Sugar, water, whipping cream (MILK), EGG, rapeseed oil, soft cheese (7%) (skimmed MILK, cream (MILK), native maize starch, salt), palm kernel oil, WHEAT flour (with added calcium, niacin, iron, thiamin), glucose syrup, reduced fat soft cheese (4%) (skimmed MILK, cream (MILK), maize starch, salt, stabilisers (xanthan gum, locust bean gum)), margarine (palm oil, rapeseed oil, water, emulsifier (mono- and diglycerides of fatty acids), natural flavouring), fat reduced cocoa powder (3%), marbled dark and white chocolate (2%) (sugar, cocoa butter, cocoa mass, whole MILK powder, whey powder (MILK), lactose (MILK), butter oil (MILK), emulsifier (SOYA lecithin), vanilla extract), semolina (WHEAT), golden syrup, skimmed MILK powder, palm stearin oil, cocoa powder, palm oil, pork gelatine, modified maize starch, emulsifiers (mono- and diglycerides of fatty acids, sodium stearoyl-2-lactylate, SOYA lecithin), raising agents (diphosphates, sodium bicarbonate).

Handling Information

Directions for Use

HANDLING INSTRUCTIONS: Defrost prior to serving. Keep refrigerated once defrosted. Use within 48 hours of defrost. This product may show signs of sugar bloom during storage, when frozen. This will disappear when the product has been fully defrosted. **DEFROSTING INSTRUCTIONS: WHOLE GATEAU:** Remove all packaging. Defrost under refrigeration (8°C or colder) for approximately 6-8 hours. **INDIVIDUAL PORTION:** Remove portion from freezer and defrost under refrigeration (8°C or colder) for approximately 3 hours.

Storage Instructions

At or below -18°C (0°F)

Please Note: This information has been supplied by manufacturers and other third parties to Thompsons Food Service Ltd. Whilst we take steps to ensure the information is correct and regularly updated, we give no warranty and no guarantee to the accuracy of this information. Product information and ingredients may change; please always read product labels carefully in addition to this document for accuracy. Please also consider changes to ingredients when products have been substituted.