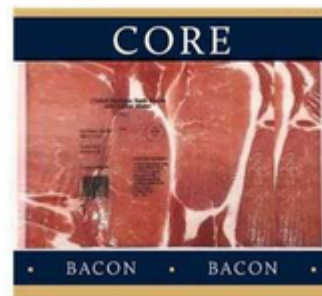


Core Back Bacon - Smoked - Information

Smoked Rindless Back Bacon

TFS Product Code: 022427
Suppliers Product Code:
Information Last Updated: 28/04/2021
Date Produced: 21/08/2025



Allergy Information

Key: **Contains** **May Contain**



Sesame



Gluten



Crustaceans



Eggs



Lupin



Nuts



Milk



Celery



Sulphur Dioxide



Soya



Cereal



Peanuts



Fish



Molluscs



Mustard

Nutritional Information

Serving Unit:

()

()

()

()

()

()

()

()

()

Dietary Information

Key: **Suitable for**



Kosher



Vegetarian



Halal

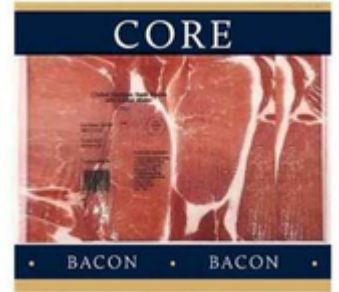


Vegan

Please Note: This information has been supplied by manufacturers and other third parties to Thompsons Food Service Ltd. Whilst we take steps to ensure the information is correct and regularly updated, we give no warranty and no guarantee to the accuracy of this information. Product information and ingredients may change; please always read product labels carefully in addition to this document for accuracy. Please also consider changes to ingredients when products have been substituted.

Core Back Bacon - Smoked - Information

TFS Product Code: 022427
Suppliers Product Code:
Information Last Updated: 28/04/2021
Date Produced: 21/08/2025



Ingredients

Pork, Water, Salt

Handling Information

Directions for Use

No usage information

Storage Instructions

No storage information

Please Note: This information has been supplied by manufacturers and other third parties to Thompsons Food Service Ltd. Whilst we take steps to ensure the information is correct and regularly updated, we give no warranty and no guarantee to the accuracy of this information. Product information and ingredients may change; please always read product labels carefully in addition to this document for accuracy. Please also consider changes to ingredients when products have been substituted.

Registered Office: Nelsons Yard, South Denes Road, Great Yarmouth, NR30 3PR, England
Company No: 07107278 VAT No: GB 986 0801 93 Directors: E. Thompson, R. Thompson, T. Thompson