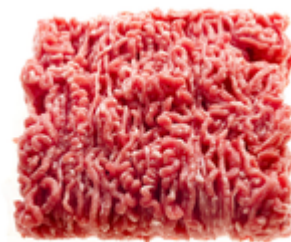


## TFS - Butchery Minced Lamb - Information

Prepared from a mix of 50% breast of lamb and 50% shoulder of lamb. The Lamb is then minced twice to ensure a consistent quality.

**TFS Product Code:** 013725  
**Suppliers Product Code:**  
**Information Last Updated:** 25/11/2024  
**Date Produced:** 18/08/2025



### Allergy Information

Key: **Contains** **May Contain**



Sesame



Gluten



Crustaceans



Eggs



Lupin



Nuts



Milk



Celery



Sulphur Dioxide



Soya



Cereal



Peanuts



Fish



Molluscs



Mustard

### Nutritional Information

Serving Unit:	100g or 100ml
Energy (kcal)	241.00
Energy (kJ)	1004.00
Protein (g)	18.00
Carb (g)	0.50
Of Which Sugars (g)	0.50
Fat (g)	19.00
Of Which Saturates (g)	9.20
Fibre (g)	0.00
Salt (g)	0.19

### Dietary Information

Key: **Suitable for**



Kosher



Vegetarian



Halal

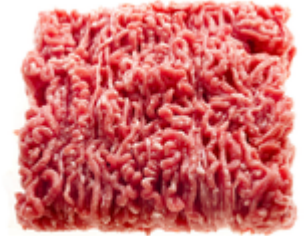


Vegan

**Please Note:** This information has been supplied by manufacturers and other third parties to Thompsons Food Service Ltd. Whilst we take steps to ensure the information is correct and regularly updated, we give no warranty and no guarantee to the accuracy of this information. Product information and ingredients may change; please always read product labels carefully in addition to this document for accuracy. Please also consider changes to ingredients when products have been substituted.

# TFS - Butchery Minced Lamb - Information

**TFS Product Code:** 013725  
**Suppliers Product Code:**  
**Information Last Updated:** 25/11/2024  
**Date Produced:** 18/08/2025



## Ingredients

Lamb

## Handling Information

### Directions for Use

Ensure the product is fully cooked before consumption.

### Storage Instructions

Store at <2°C

**Please Note:** This information has been supplied by manufacturers and other third parties to Thompsons Food Service Ltd. Whilst we take steps to ensure the information is correct and regularly updated, we give no warranty and no guarantee to the accuracy of this information. Product information and ingredients may change; please always read product labels carefully in addition to this document for accuracy. Please also consider changes to ingredients when products have been substituted.

Registered Office: Nelsons Yard, South Denes Road, Great Yarmouth, NR30 3PR, England  
Company No: 07107278 VAT No: GB 986 0801 93 Directors: E. Thompson, R. Thompson, T. Thompson