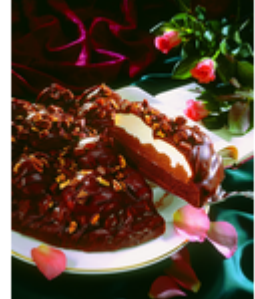


## Sidoli Chocolate Lumpy Bumpy - Information

**TFS Product Code:** 012753  
**Suppliers Product Code:**  
**Information Last Updated:**  
**Date Produced:** 17/05/2024



### Allergy Information

Key: **Contains** **May Contain**



Sesame



Gluten



Crustaceans



Eggs



Lupin



Nuts



Milk



Celery



Sulphur Dioxide



Soya



Cereal



Peanuts



Fish



Molluscs



Mustard

### Nutritional Information

Serving Unit:

()  
( )  
( )  
( )  
( )  
( )  
( )  
( )  
( )  
( )

### Dietary Information

Key: **Suitable for**



Kosher



Vegetarian



Halal



Vegan

**Please Note:** This information has been supplied by manufacturers and other third parties to Thompsons Food Service Ltd. Whilst we take steps to ensure the information is correct and regularly updated, we give no warranty and no guarantee to the accuracy of this information. Product information and ingredients may change; please always read product labels carefully in addition to this document for accuracy. Please also consider changes to ingredients when products have been substituted.

# Sidoli Chocolate Lumpy Bumpy - Information

**TFS Product Code:** 012753  
**Suppliers Product Code:**  
**Information Last Updated:**  
**Date Produced:** 17/05/2024



## Ingredients

Sugar, water, whipping cream (MILK), reduced salt soft cheese (7%) (skimmed MILK, cream (MILK), native maize starch, salt), palm kernel oil, EGG, rapeseed oil, WHEAT flour (with added calcium, iron, niacin, thiamine), glucose syrup, reduced fat soft cheese (4%) (skimmed MILK, cream (MILK), maize starch, salt, stabilisers (xanthan gum, locust bean gum)), margarine (palm oil, rapeseed oil, water, emulsifier (mono- and diglycerides of fatty acids), natural flavouring), fat reduced cocoa powder (3%), marbled dark and white chocolate (2%) (sugar, cocoa butter, cocoa mass, whole MILK powder, whey powder (MILK), lactose (MILK), butter oil (MILK), emulsifier (SOYA lecithin), vanilla extract), durum WHEAT semolina, modified maize starch, skimmed MILK powder, palm stearin oil, cocoa powder, palm oil, pork gelatine, MILK protein, raising agents (diphosphates, potassium carbonates), emulsifiers (mono- and diglycerides of fatty acids, sodium stearoyl-2-lactylate, SOYA lecithin), WHEAT starch, WHEAT protein.

## Handling Information

### Directions for Use

No usage information

### Storage Instructions

No storage information

**Please Note:** This information has been supplied by manufacturers and other third parties to Thompsons Food Service Ltd. Whilst we take steps to ensure the information is correct and regularly updated, we give no warranty and no guarantee to the accuracy of this information. Product information and ingredients may change; please always read product labels carefully in addition to this document for accuracy. Please also consider changes to ingredients when products have been substituted.

Registered Office: Nelsons Yard, South Denes Road, Great Yarmouth, NR30 3PR, England  
Company No: 07107278 VAT No: GB 986 0801 93 Directors: E. Thompson, R. Thompson, T. Thompson